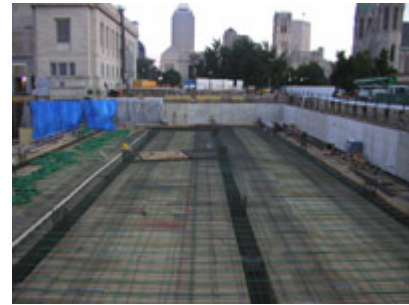
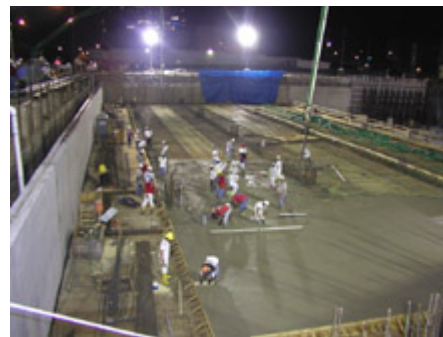

Construction Highlights - September, 2003

Current Project Schedule

On Monday, August 18, 2003, the wooden forms were in place to begin the first elevated concrete "slab-on-deck". That evening, approximately 570 cubic yards (or 57 truck loads) of concrete were poured to create a portion of the upper garage floor. The concrete was poured over a five hour period using two concrete pumping trucks. The slab-on-deck was completed by 6 am on Tuesday, August 19, 2003.

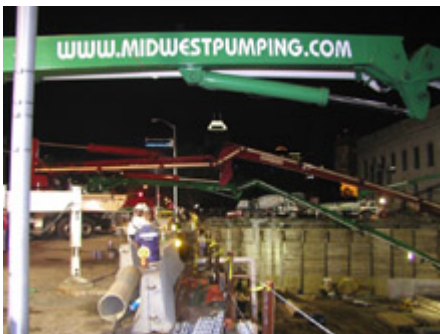


Night has come and the pouring for the first slab-on-deck has begun



The first slab-on-deck begins to take form

After the August 18 concrete pour, workers removed the temporary garage ramp that ran along Pennsylvania Street. Following the removal of the ramp, workers were able to install the final lagging boards for the shoring system around the walls of the construction site. Following the site preparation work, the next concrete slab-on-grade (on the ground) pour was scheduled, but due to rainy weather was postponed until the evening of Wednesday, September 3, 2003. Approximately, 1,720 cubic yards (or 172 truck loads) of concrete were poured.



Pumps line-up and deliver 1,720 cubic yards

Pennsylvania Street was partially closed during the evening hours to allow the concrete trucks to steadily supply concrete to the site. Concrete pumping trucks with extended arms were stationed on Pennsylvania Street to deliver the concrete through a series of temporary pipes to the desired locations.

Construction Highlights - September, 2003



Distinct levels form as the garage grows



Pumps line-up and deliver 1,720 cubic yards



Trucks waiting as night sets in to deliver their loads.

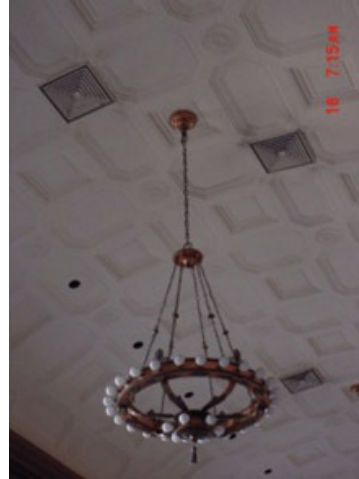
The garage contractors are preparing for additional concrete slab on grade and elevated deck pours in September. Additional concrete columns and walls will be poured to support the elevated concrete floor deck. The next elevated concrete "slab-on-deck" pour is scheduled for the evening of September 9, 2003.

A second crane was brought to the construction site to expedite hoisting operations. This crane, known as a "crawler-mounted latticework boom" crane is a 250-ton machine unit with a boom length of 240 feet. The crawler crane, along with the tower crane, picks up and delivers materials where needed anywhere on the site.

Construction Highlights - September, 2003

Inside the Cret Building

Another renovation project underway in the Cret Building involves the historical chandeliers in the Main Room and the East and West Reading Rooms.



Large and small chandeliers, alike, have been removed for restoration

In May 2003, the Central Library's chandeliers were removed from the historic Cret Building for restoration. Lite Makers, Inc., of Long Island, New York, will be restoring the two original 1917 chandeliers located in the Main Room, also known as the Delivery Room, and will be refurbishing the ten smaller chandeliers, installed in 1923, located in the East and West Reading Rooms in the Cret Building.

To lower the chandeliers in the Main Room, Lite Makers used a winch that is housed in the attic above the Main Room. The winch was modified during an earlier renovation project in the 1960's to accept a tool that is used in the electrical trade called a "power pony". The power pony is motorized and operates the winch to raise or lower the chandeliers. The chandeliers were then taken apart by sections and hand-packed, crated, and shipped back to their facility for the start of the extensive restoration process. The project includes restoring the fixtures back to the original finish and upgrading the lighting requirements according to architectural plans.



Construction Highlights - September, 2003

In the East and West Reading Rooms, the ten smaller chandeliers, five in each room, did not have a winch in place, but were lowered and raised with a type of "block and tackle" device. These chandeliers were not part of the original 1917 Cret Building, but were added in 1923 to replace a system of indirect lighting.



The fixtures were modeled after the original bronze chandeliers in the Main Room. Lite Makers will be refurbishing and cleaning the fixtures, replacing the wiring, and replacing the lamps.

The electrical prime contractor, [ERMCO](#), selected Lite Makers to perform the restoration work on the historic chandeliers. Established in 1974, Lite Makers, Inc. is a family business owned by Iorio family members: Phillip Sr., Phillip Jr., Gary, and John. Phillip Iorio, Sr., once worked for the original manufacturer of the chandeliers, the E. F. Caldwell



Lighting Company. The company was founded by Edward F. Caldwell in the early 1900's, and created custom lighting fixtures and decorative ironwork

for many private homes and prominent buildings in New York during that period. Mr. Iorio was the top craftsman for the company from 1945 to 1952, and ran the factory located at 101 Park Avenue, New York, New York. The E. F. Caldwell Company closed its doors in 1952.



When Lite Makers was contracted to perform the restoration work, Phillip, Sr., recognized the original workmanship, and was pleased to learn that he would be once again working on chandeliers produced by the Caldwell Company.

Reinstallation of the chandeliers is expected to take place during the first quarter of 2004, along with the completion of the remaining restoration work to the Cret Building.

Construction Highlights - September, 2003

More information about the custom lighting design work of the E. F. Caldwell Co. can be found at the Smithsonian Institute's Cooper-Hewitt, [National Design Museum](#) located in New York City, New York. The archive collection, which is maintained by the Smithsonian Institution Libraries, includes correspondence, drawings, research materials, and biographical information from the E. F. Caldwell Lighting Co. from the period 1894 - 1940's. The collection contains more than 50,000 images of lighting and other metal objects created by the firm. Caldwell catered to very exclusive clientele, including Andrew Carnegie, creating lighting for the Andrew Carnegie mansion, which is now the home of the National Design Museum.

View from the Tower Crane - The Man Behind the Monster



When Rex, the tower crane operator at the Central Library construction site, goes to work each day, he climbs some 220 feet in a mere 20 minutes to his office - the operator's cab on the boom of the tower crane.

Rex began working with tower cranes as an oiler, a tradesman responsible for performing routine maintenance on equipment including maintaining the fluid levels for the machinery. His first experience actually operating these monster machines occurred when he was 24 years old, and had to take over for a sick co-worker.

Rex, an employee of Shook LLC, is only one of four tower crane operators in the State of Indiana. His years of experience allow him to communicate clearly via hand signals and radio communications to safely coordinate the work with the ground crew. He has never dropped anything off of the crane, and has had many opportunities to demonstrate his safety-oriented skills at a variety of building



construction project sites including: Methodist Hospital, St. Vincent Hospital, and the Cancer Center at IUPUI. The tallest tower crane job that Rex has ever handled was the Bank One construction project where he was 800 feet in the air.

From his office high in the sky, Rex watches over the construction site and ensures that materials are safely transported to and from various locations on the site.

Central Library Quick Facts

Did you know that in 1917, the contract for the specially designed chandeliers was awarded to the low bidder for a total of \$13,049. By today's standards, the current

Construction Highlights - September, 2003

replacement value for the chandeliers in the Main Room is now estimated to be \$100,000 each.

Did you know that the "Main Room" in Central Library, known for many years as the "Delivery Room", once contained a semi-circular desk opposite the front door in front of swinging doors which led to a passageway called "the bridge"? Beyond were the book stacks. Library staff would retrieve books from the stacks and then "deliver" the materials to the patrons, hence the origin of the term "Delivery Room".