

---

# Construction Highlights - August, 2004

---

## Current Project Schedule



Outside Construction

Construction progress on the garage foundation in early 2004 was halted as project engineers and architects became aware of some concrete structural issues. Construction activity on the garage and erection of the steel tower was suspended.

During this time, Library staff and its construction partners worked to determine the scope of problems relating to the placement of concrete in the two-level underground parking facility and to identify steps to correct the situation. The Library Board and staff assured the public that the parking garage would be properly repaired and constructed before the project would continue.

Beginning in late July, a repair plan was finalized, and contractors were engaged to begin the process of correcting the structural issues. The impact of repairs on the project's schedule and budget will not be known until further investigation takes place.

While the construction teams were developing a plan to identify and repair the damage to the construction, progress on the restoration of the inside of the original 1917 Cret Building continued on schedule.

## Renovations to the Cret Building

The front steps to the building on St. Clair Street across from Legion Mall have undergone significant renovation. Over the years, the underlying support structure had started to deteriorate to the point where the Library would have soon had to prohibit people from using the steps because the steps could no longer accommodate the weight.



South steps

---

## Construction Highlights - August, 2004

---



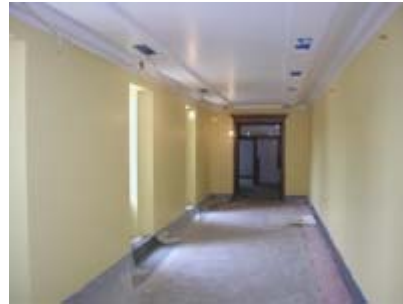
South steps

For this part of the project, the original granite steps were removed so that a new foundation for the steps could be installed along with a snowmelt system to be used during the icy winter months. Along with the steps, the outdoor light fixtures will be renovated. Upon completion of this phase, the reinstallation of the original granite steps will take place.

Upon entering the south entrance to the building, the changes to the south hallway are noticeable. A new Art Exhibit display area will be located at the west end of the hallway.



South hallway - east side.



South hallway - west side



East Reading Room

In the East and West Reading Rooms, new shelving has been installed into the existing vertical framework. The exterior glass in the windows has been replaced with a highly efficient material to help reduce heating and cooling costs and to protect the books from UV damage.

Plaster cracks in the ceilings of both rooms have been repaired and painted, and sprinklers have been added for fire protection. Computer wireless access points will be installed in both rooms for patron convenience, and the original fireplaces will be activated with gas logs to create a focal point for a casual reading environment.



West Reading Room

---

## ***Construction Highlights - August, 2004***

---

The Mezzanine area and Simon Reading Room will contain a new highly efficient LED lighting system built into the shelving to provide a soft warm glow on the spines of the books.



**South Mezzanine**

The Simon Reading Room will exhibit the new books on display shelves, allowing the librarians to arrange covers with their faces out.



**Simon Reading Room**

In the area formerly known as the Cropsey Auditorium, the Indianapolis-Marion County Foundation Offices will be housed. Originally located in the Library Services Center, the Foundation is responsible for funding nearly half of the cost for the project, as well as providing funding for Library programs and staff development.



**IMCPL Foundation Offices**

The former visual arts and music sections will now be home to new offices for librarians and staff.



**IMCPL Foundation  
Conference Room**



**First Floor, West Side - former**



**First Floor, West Side - new**

---

## Construction Highlights - August, 2004

---



Second Floor, West Side - former



Second Floor, West Side - new



A new, more efficient HVAC (heating and air conditioning) system is being installed to support the entire Transformed Central Library Building.

As the renovations in the Cret Building near completion, construction activity will once again turn to the garage foundation and repairing the structure. The Library's Project Team remains fully committed to the completion and delivery of a well designed and constructed facility which will be an enduring landmark, and will serve Indianapolis residents well through the 21st Century.

### Central Library Quick Facts

**D**id you know that the ornamental ceiling of the Main Reading Room was designed by architect, C. C. Zantzing, and constructed by Chapman Decorative Company, both of Philadelphia?



The ceiling contains a Pompeian style border around the perimeter. On the outer edge is a grape border, symbolic of the fertility of the state. The inner border is of oak, representing the white oak tree, for which Indiana was at one time supplier to the world market and also depicts the strength of the state.

---

## ***Construction Highlights - August, 2004***

---



Between the borders are two sets of paintings. One set contains thirty-two reproductions of printers' colophons or printers' marks. Zantzinger chose colophons of famous printers from the 15th through 19th century. The other set of paintings contain typical flora and fauna of the state.

A series of bas-relief plaster plaques can also be found on the ceiling that depicts the early history of Indiana. The corners show scenes of Conestoga wagons, and the ends and sides have plaques depicting treaties with the Indians, early French explorers, and early pioneers.



In 1984 -1985, through a project sponsored by the Indianapolis-Marion County Foundation, the decorative ceiling was cleaned, repaired, and reconditioned, along with the cleaning of surfaces and fixtures in the Delivery Room and the East and West Reading rooms.

*Photos courtesy of Ivan Christensen, IMCPL Staff Photographer*